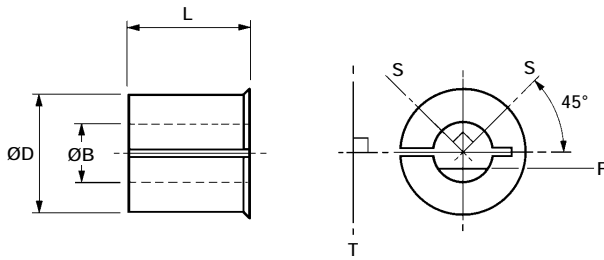


HUCO-LOK METALLIC (NON-INSULATING) & GLASS-FIBRE (INSULATING) BORE ADAPTORS



Bore For optimum fastening, install HUCO-LOK bore adaptors as shown.

'S' represents screws in set screw hub.

'T' represents tangential screw in clamp hub.

'F' shows recommended orientation of flatted shaft in set screw hub.

Note that both traction and concentricity may be affected when using an adaptor. For best results shafts toleranced +0 / -0.0004" or better, are recommended. Undersized shafts become progressively less effective. For similar reasons, flatted shafts with more than 1/4 of their diameter removed are not recommended.

MAIN TABLE - DIMENSIONS & ORDER CODES

Adaptor ref.	251	253	*254	255	257	259	260	261	262	263
ØD	5mm	0.25	8mm	8mm	10mm	0.50	16mm	20mm	1	28mm
L	0.17	0.26	0.23	0.32	0.32	0.42	0.52	0.79	0.79	0.98
to fit bores coded	20	24	28	28	32	36	42	48	53	54
minor ØB	Order code									
0.120	251.15	253.15	254.15	255.15						
0.125	251.16	253.16	254.16	255.16						
0.1875		253.19	254.19	255.19	257.19					
0.250					257.24	259.24	260.24			
0.3125					257.27	259.27	260.27	261.27		
0.375						259.31	260.31	261.31	262.31	
0.500							260.36	261.36	262.36	263.36
0.625								261.41	262.41	263.41
0.750									262.47	263.47
0.875									262.50	263.50
1.000										263.53

2mm	251.11	253.11								
3mm	251.14	253.14	254.14	255.14						
4mm	251.18	253.18	254.18	255.18	257.18					
5mm		253.20	254.20	255.20	257.20	259.20				
6mm			254.22	255.22	257.22	259.22	260.22			
7mm					257.25	259.25	260.25			
8mm					257.28	259.28	260.28	261.28		
9mm						259.30	260.30	261.30		
10mm						259.32	260.32	261.32	262.32	
11mm							260.33	261.33	262.33	
12mm							260.35	261.35	262.35	263.35
14mm							260.38	261.38	262.38	263.38
15mm								261.40	262.40	263.40
16mm								261.42	262.42	263.42
18mm								261.45	262.45	263.45
19mm									262.46	263.46
20mm									262.48	263.48
22mm									262.49	263.49
24mm										263.51
25mm										263.52
material	brass				al. alloy					

Major diameter D is toleranced -0.0005 / -0.002 & -0.013 / - 0.05mm

Minor diameter B is toleranced +0.0012 / -0 & +0.03 / -0mm

* Short adaptor 254 is used with couplers as indicated in the standard bores tables. Use 255 for all other 8mm bores.

HOW TO ORDER

253.18

Adaptor ref.

Minor ØB ref.

An identical range is manufactured in glass-fibre to provide electrical isolation between shafts in all-metal couplers, i.e. Flex M & Flex B.

253G18

Adaptor ref.

Minor ØB ref.